

100 N. WASHINGTON ST CITY CENTER AT WASHINGTON

FOR LEASE: RETAIL

GREEN BAY



Building Features

Building Size:	11,219 SF	Lease Term:	3-5 years
Building Type:	Retail	Lease Type:	NNN
Traffic Count:	Over 15,000 cars daily	Annual Rent:	\$18.00 / SF
Space Available:	Up to 11,219 SF	CAM:	\$3.14

Property Features

- Conveniently located at the intersection of two prime commercial arteries, several downtown hotels and the KI convention center
- Adjacent to Green Bay's booming riverfront development
- Daytime population of 11,000 professional office workers
- 800 stall parking ramp contiguous with development
- One block from children's museum and proposed condo development

For more information, please contact:



Ryon Savasta
608.830.2929 o
608.212.5333 c
rsavasta@sarainvest.com

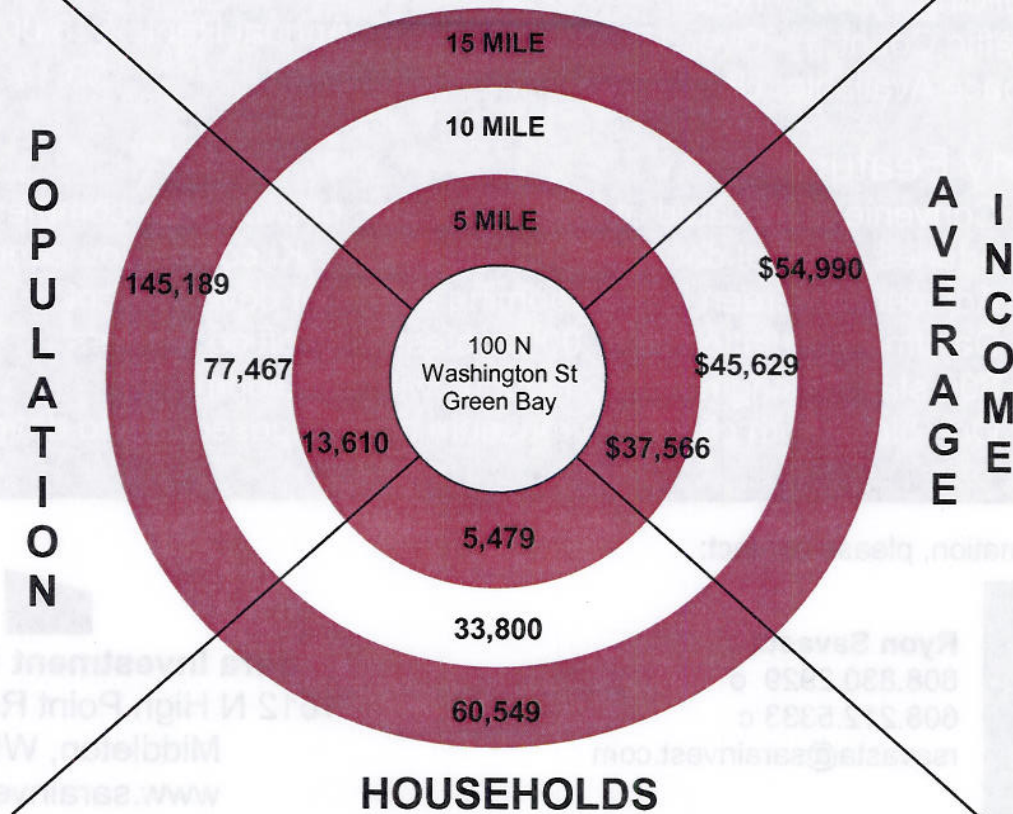
Sara Investment Real Estate
1612 N High Point Road, Suite 201
Middleton, WI 53562
www.sarainvest.com

GROWTH · OPPORTUNITY · TRENDS

AERIAL MAP



DEMOGRAPHIC SNAPSHOT



New Development



City Center at Washington 100 N. Washington St. Green Bay, WI

Building Size: 11,219 SF
Building Type: Retail
Traffic Count: Over 15,000 Cars
Space Available: Up to 11,219 SF

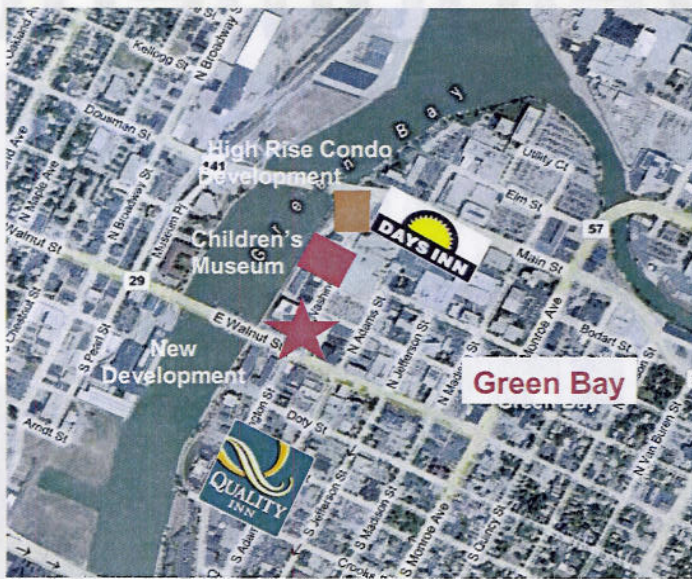
Lease Term: 3-5 Years
Lease Type: Triple Net
Annual Rent: \$18.00 / SF
CAM: \$3.14

PROPERTY FEATURES

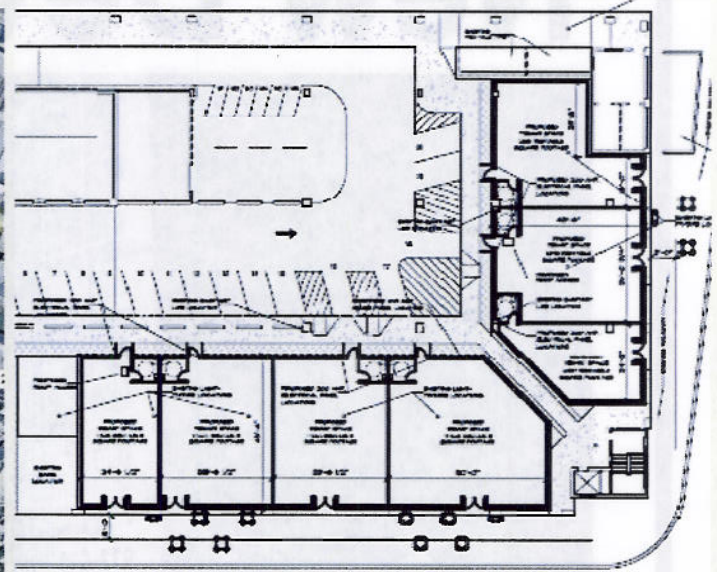
- One block from proposed high rise condo development and children's museum
- Conveniently located near several downtown hotels and the KI convention center
- Located at the intersection of two prime commercial arteries
- Daytime population of 11,000 professional office workers
- 800 stall parking ramp contiguous with development
- Adjacent to Green Bay's booming riverfront development and the planned River Walk

Growth • Opportunity • Trends

SARA INVESTMENT REAL ESTATE
1612 N. High Point Road, Suite 201, Middleton, WI 53562
www.sarainvest.com

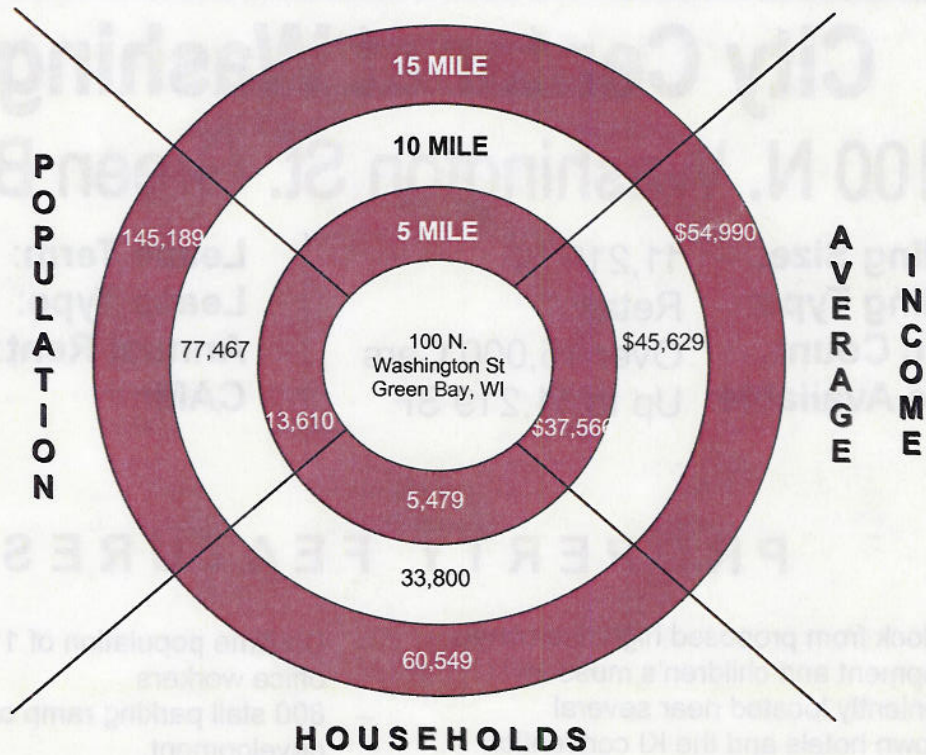


Aerial Map



Proposed Floor Plan

DEMOGRAPHIC SNAPSHOT



For Additional Information
Ryon Savasta
 Direct: 608.830.2929
 Cell: 608.212.5333
 rsavasta@sarainvest.com